



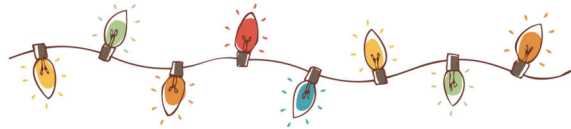
**Bank of Alma**

Alma • Nelson • Pepin • Wabasha

Member FDIC • Equal Housing Lender

## Holiday Bus Trip: Rotary Lights

Tuesday, December 13<sup>th</sup>



Join your friends and neighbors to visit the **Rotary Lights in LaCrosse.**

Call **608-685-4461** or stop at one of our branches to purchase your tickets. Seats are limited. Parking available at Nelson branch or at Walker's Silvermoon.

**Tickets:**            \$25 regular price                    *purchased in advance only*  
                             \$23 for 55 and Better

**Timetable:**        4:30            Depart from Nelson branch  
                             4:45            Depart from Walker's Silvermoon\* in Alma

\*They open at 3pm for those who would like to order food.

Please Note: Seats are limited, however, if too few people sign up by December 5, we may have to cancel and refund the tickets.